

Fixpoint Clamp

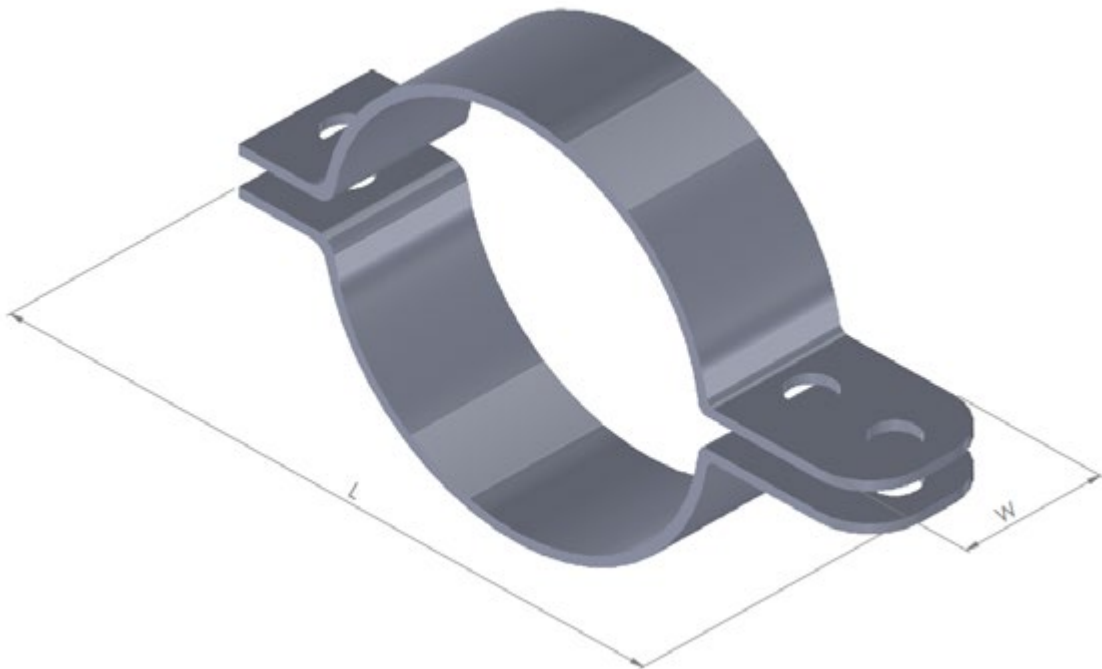
January, 2021

MATERIAL

- **Body:** Carbon Steel body with internal gripping teeth made of 316L stainless steel.

NOTES

- Primer coated.
- Stainless steel internal gripping teeth.
- Installation method: welded or bolted.
- The purpose of this accessory is to prevent pull-out of mechanical fittings.



Catalog Number	Pipe Diameter	L (mm)	W (mm)
66206302	63	240	40
66207525	75	252	40
66209003	90	266	40
66211004	110	286	50
66212505	125	294	50
66214006	140	308	50
66216006	160	329	50
66218006	180	349	50
66220008	200	372	60
66222508	225	398	80
66225010	250	422	80
66228010	280	453	80
66231512	315	489	80
66235514	355	529	100
66240016	400	574	100
66245018	450	624	100
66250020	500	674	100
66256022	560	734	100
66263024	630	804	100
66271028	710	925	100